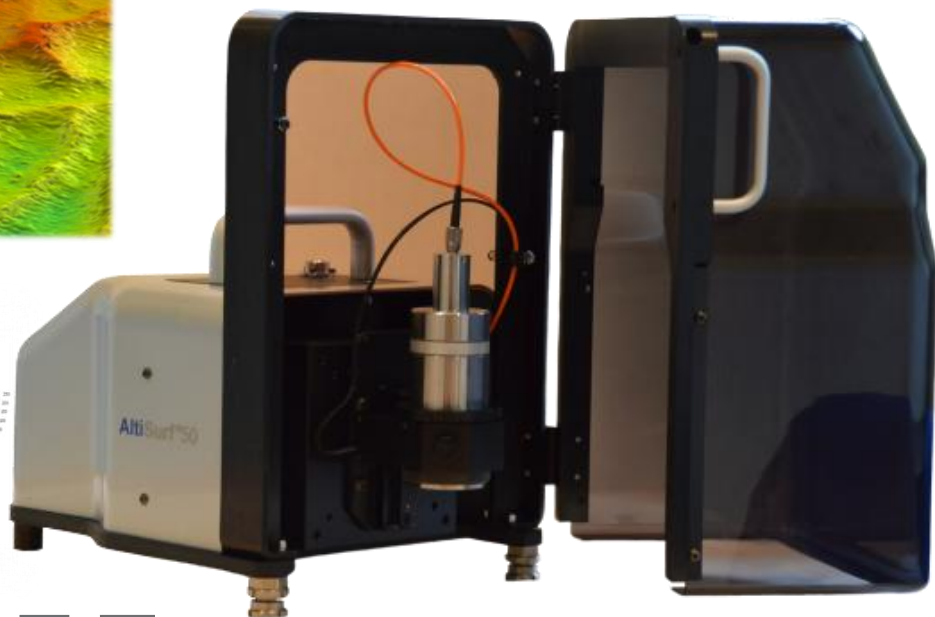
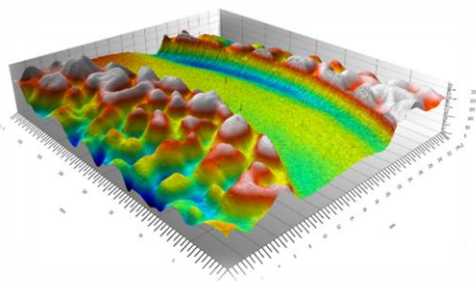
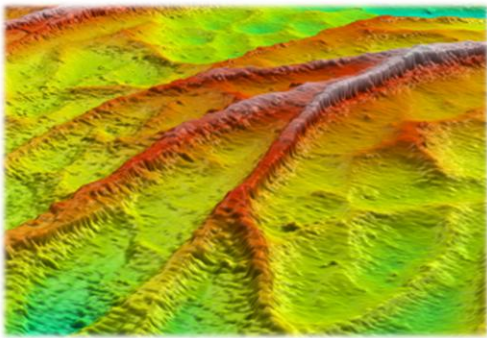




AltiSurf[®]50

The AltiSurf[®]50 allows highly accurate optical measurements wherever you want thanks to its integrated optical sensor and small size. This compact 3D profilometer can be integrated into a laboratory marble, be easily transported for measurements at the edge of the line or on very large parts.

The AltiSurf[®]50 has found its applications in the measurement of engravings, polished or micro-structured surface textures, particularly in the watchmaking, fiduciary and laser engraving industries. The AltiSurf[®]50 is also used in the characterisation of heritage samples (paintings, books, sculpture...) It can be mounted with several probes or a camera or with centering rollers hardened up to 200°C for best measurement mobility in production environments.



ALTIMET

Technical	Specifications
Measurement Principle	Non-contact, Optical, based on Confocal Chromatic technology, Interferometric & other
Volume (X x Y x Z)	50mm x 50mm x 50 mm
Speed of Stages	Up to 50mm/s
Flatness of Stages (Corrected)	4 μ /100mm (less than 2 μ /50mm)
Measurement Range	From 100 μ m to 25mm
Resolution in Z	Down to 2nm
Lateral Resolution	0,7 μ m
Measuring Angle	Up to 90° \pm 45°
Step-Height Accuracy (1 μ m)	0,005 %
Low. Measurable roughness (Ra / Sa)	70nm / 50nm
Low. Measurable Thickness	1 μ m
Norm	ISO 4287, ISO 25178
Software	Acquisition : Phénix V2 / Analysis : PhénixMap

Features & Advantages

- Ability to measure every surfaces (rough, transparent, black, polished...)
- Vast choice of measurement range & technology (confocal, interfero, contact)
- Optical Measurement : no Damage to the measured part
- Max. 50x50x50mm measurement area
- Very compact and light (10kg) ; easy to transport
- Same resolution for each points – high accurate data
- Embedded measurement protocols
- Easy to use interface : automation of protocols



Phénix V2 Technology



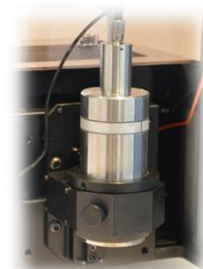
Easy measurement everywhere



Embedded Electronic



Mount on other machine



Anticollision system

ALTIMET SAS

Bâtiment Ivomar
298 Allée du Larry
74200 MARIN / France

Std : +33 (0)450 818 888

@ : altimet@altimet.fr

W : www.altimet.fr